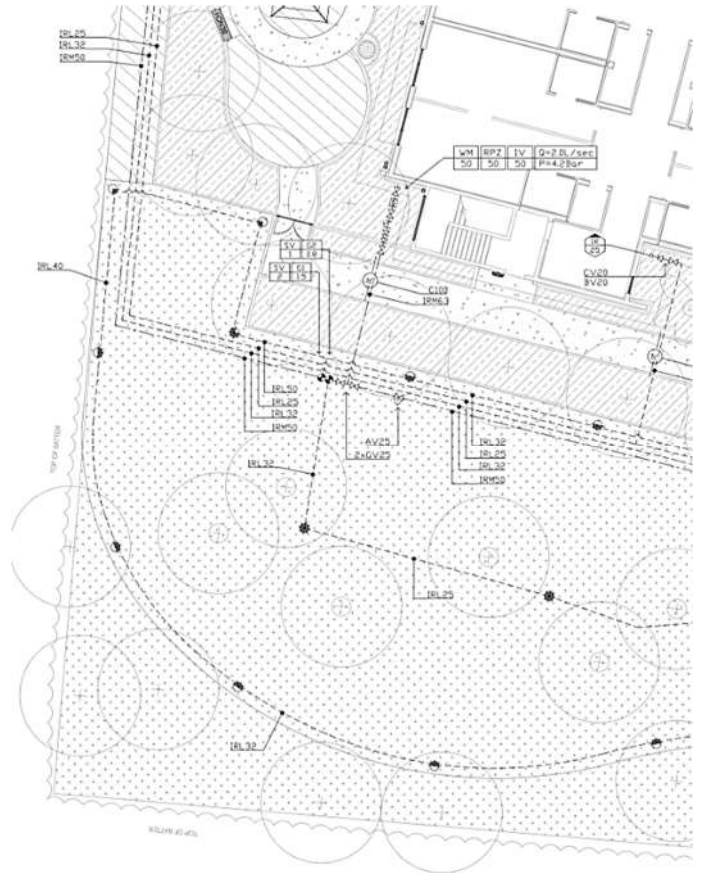
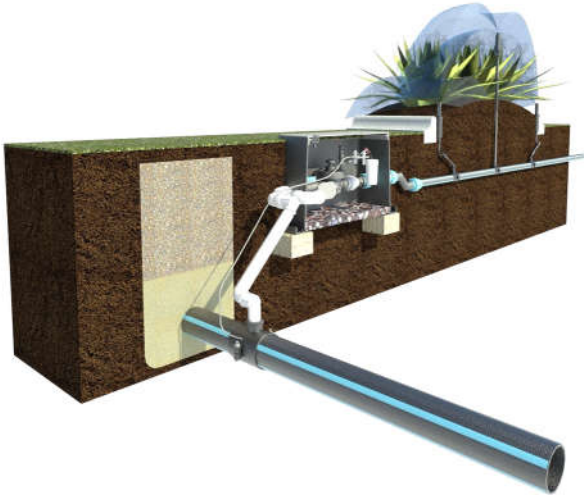


## DPoV Consulting

Irrigation Consulting Services  
BIM & Revit 3D Specialist



## Company Profile

2020

## Mission Statement



Digital Point of View originated in 2013 with the vision of providing new services to the irrigation and water industry by exploring the ever-evolving requirements of clients through the availability of new technologies.

With over 20 years experience in the irrigation design and consulting industry with projects varying from local domestic properties to world class international developments, DPoV has covered a wide variety of irrigation water treatment projects.

The vision of DPoV is to provide clear concise irrigation designs and documentation for client education through the use of our industry leading CAD services.

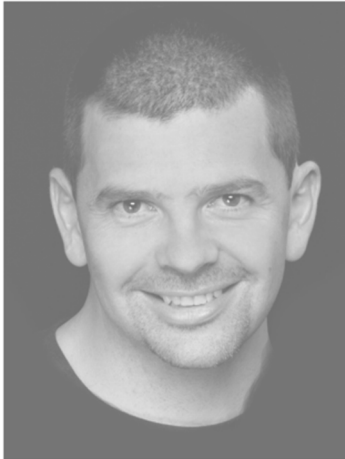
From 3D site visualisations of irrigation components and complex headworks assemblies to detail design drawings of irrigation systems, DPoV highly details all aspects of irrigation and water pumping/ filtration systems from the ground up.

**Cost Efficient Designs... Detailed Clarity... Unparalleled 3D Presentations.... DPoV provides.**

## Personal Profiles

### Darren Rowlatt

*Designer Director*



As Designer and Director at DPoV, Darren Rowlatt is the primary contact and designer for all projects. Through industry experience and qualifications Darren brings a new angle to irrigation designs with the use of BIM through software such as Revit and Autocad for industry leading designs.

In addition to irrigation industry ground breaking 3D and BIM designs, Darren's irrigation design experience covers all aspects of irrigation designs from Residential Landscapes to Sporting Fields to World Class Botanical Gardens.

**Education:** Associate Diploma in Engineering Manufacturing (Hydraulics)

**Software:** Autocad, Revit, Navisworks, Office

### Stacey Rowlatt

*Administration*

Stacey our Accounts and Administration Assistant has over 30 years experience in project accounts and client liaison deals with daily administration, accounts, and customer contacts.

**Software:** MS Office, Quickbooks, MYOB

### Daniel Wilson

*CAD/BIM*

As an upcoming designer Daniel brings a new edge to the CAD /BIM and IT side of the business. Daniel has recently completed his Associate Degree in Civil Engineering and his Autocad and Revit skills he makes a valuable resource to the DPoV team.

**Software:** Autocad, Revit, Adobe, Office

## Office Location



## Insurances

DpoV holds Professional Indemnity insurance for all our irrigation designs and drafting services to the value of \$20 Million, and public liability for all works to the value of \$20 Million.

DPoV possesses a fully licensed version of the latest edition of Autocad, Autocad MAP 3D, Autocad MEP, Revit, 3D Studio MAX, Navisworks, MS Office.

## DPoV Design & Consulting Disclaimer

DPoV does not provide or cover the following within the design and drafting services offered:

- Engineering designs, drawings, calculations or certificates in any form for any structures or equipment associated with the project in concern other than irrigation systems.
- REPQ certifications
- Engagement of engineering professionals for the purposes of fulfilling the above mentioned items.
- Council or local government approvals or documentation for any applications.



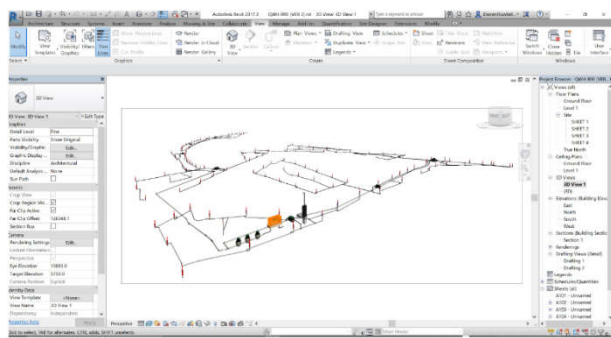
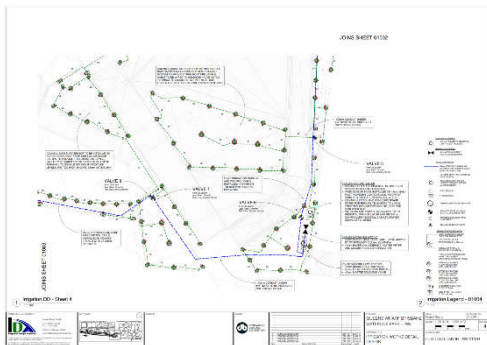
## Irrigation BIM Design, 3D Drafting & Consulting Services

The following projects experience listed have been under taken by Darren Rowlatt either whilst operating DPoV or under previous co-owned business Irrigation Design Australia with Rick Freeman current owner / operator of I.D.A.

### Queens Wharf Waterline Parklands, Brisbane (Detail Design BIM – LOD 100,200 & 300)



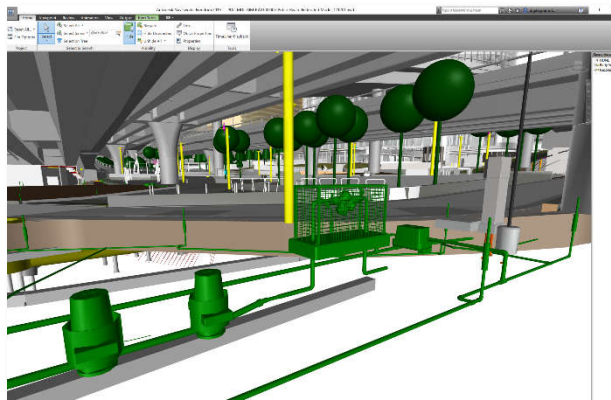
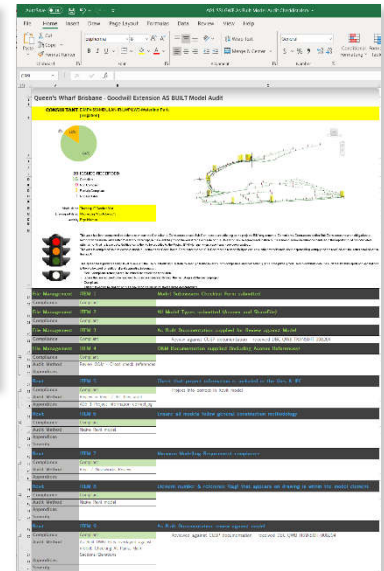
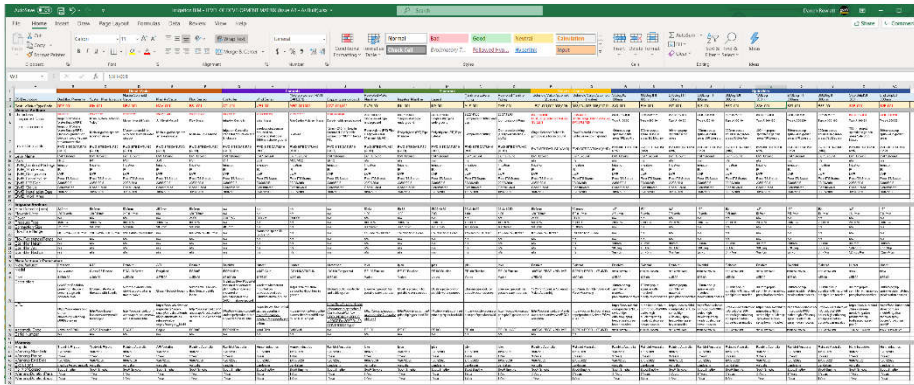
Queens Wharf Waterline Parkland is the first project within SE Queensland that was fully design and documented as a BIM project within Revit. The entry parkland from QUT Gardens Point Campus is the first stage of the Queens Wharf Development that will project Brisbane CBD onto the international tourist scene.



From water supply and controller locations, mainlines and valve assemblies, down to individual sprinkler heads all components of the landscape irrigation system was modelled in accurate detail for collaboration with site project models.



# Queens Wharf Waterline Parklands, Brisbane (Construction & Post Construction BIM - LOD 450 & 500)



**RE: QWB – Irrigation Revit Model close out**

Good morning a|l,

A fantastic start to the week, Irrigation is complete. Thank you for sending the Final Models last Friday, we've reviewed the models against the minor issues which were picked up in the last round of audits – these have all been resolved by **DPoV** and **SSI** for final as constructed sign off and client hand over.

Thanks also to **DPoV** and **SSI** for their efforts in completing the data requirements and fixing the co-ordination issues!

Regards

**Rhys Holman** | Digital Project Manager



P: +61 7 3503 5800 | M: +61 432 287 925

E: Rhys.Holman@dbmvircon.com | W: bdmvircon.com

Level 1, A1 32 Cordelia St, South Brisbane QLD 4101 Australia

Kind Regards,

**Patrick Fingleton**  
BIM Manager  
D +61 2 8934 0645  
[Patrick.Fingleton@consultant.aecom.com](mailto:Patrick.Fingleton@consultant.aecom.com)

**AECOM**  
Level 21, 420 George Street, Sydney, NSW 2000  
PO Box Q410, QVB PO, Sydney, NSW, 1230  
T +61 2 8934 0000 F +61 2 8934 0001  
[www.aecom.com](http://www.aecom.com)

Working closely with the irrigation contractor SS Irrigation, DPoV was engaged to develop the irrigation Revit model from design LOD 300 level all the way through construction to LOD 500 incorporating complex MetaData spreadsheets within Revit family models to federate an complete irrigation BIM compliant model.

Queens Wharf project is a first of its kind development in Queensland and DPoV provided a landscape irrigation industry first BIM model which has received the highest accolades in the industry to date.

DPoV Consulting has just been engaged by the ARIA Property Group for the irrigation design and consultancy for the World Class Urban Forest development in South Brisbane.

With over 1,200 trees to cover the façade of this cutting edge building, it will be the densest planted building in the southern hemisphere.

The challenges that this project will bring to all levels of consultancy is not something that has been seen to date.

DPoV Consulting will be directly involved with the PHD Engineering Students of Griffith University for developing the irrigation and planter box concept which must meet stringent regulations to conform with QFES fire prevention guidelines.



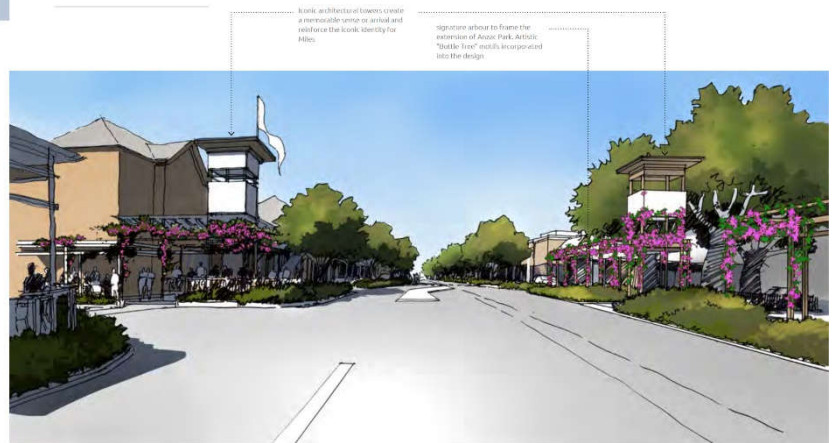
This ambitious development is like nothing that has been seen before and DPoV Consulting is proud to be a key player in a project that will be a global standard redefining project that will raise the bar for all high rise developments in the future around the world.



# Miles CBD Streetscapes (WDRC)

Western Downs Regional Council's latest project involves the realignment of the main street of Miles to rejuvenate public interaction with local shops and restaurants in a safe and calm environment whilst maintaining the current high volume heavy vehicle traffic that the centre of Miles has always been.

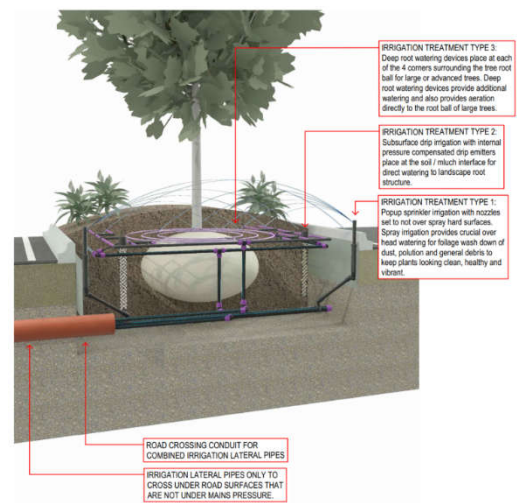
## 6.0 Key Strategies



ARTISTS IMPRESSION LOOKING EAST ALONG THE WARREGO HIGHWAY WITH PINE STREET INTERSECTION

DPoV was commissioned under VEE Design to undertake the irrigation design needs for the refreshing and relaxing landscapes that the proposed redevelopment would bring to the busy CBD of Miles.

3D concept imagery was a key focus of resource that DPoV brought to the landscape team and in doing paved the way for a quick and easy DA process with council through easy understanding of proposed irrigation concepts via the detailed renderings of all components.



2.0 TYPICAL DETAIL - Streetscapes median / island planting irrigation concepts



1.0 TYPICAL DETAIL - Streetscapes irrigation concept

From concept irrigation design renders through to complete Tender Documentation, DPoV can provide it all.



# 80 Ann Street Brisbane (Suncorp Head Office – Mirvac Development)

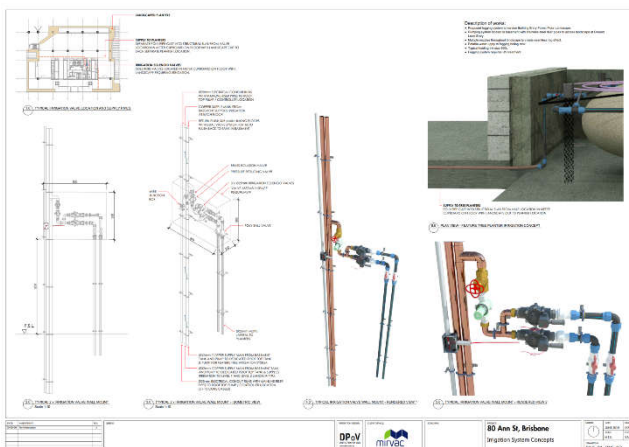
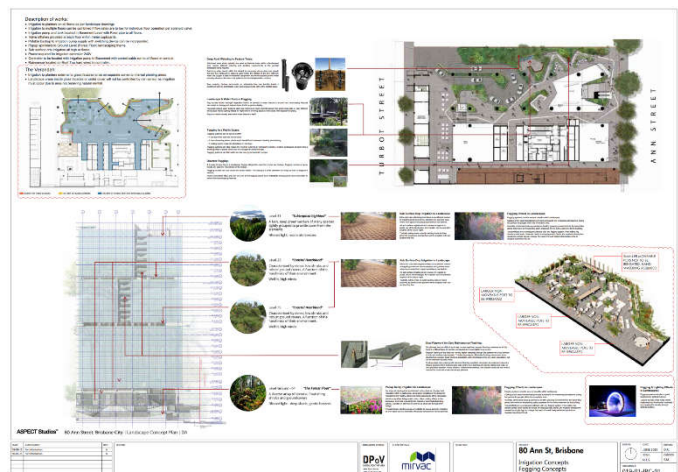



Mirvac’s latest development right in the heart of Brisbane’s CBD will be the new head quarters for Suncorp.

With the design brief centred on encapsulating the feel and tranquility of tropical Queensland within a modern high-rise building, design concepts for all aspects of engineering is a challenge for all consultants involved.

DPoV was engaged in conjunction with Aspect Studios to develop conceptual landscapes incorporating irrigation to seamlessly provide a living landscape heart for the jewel in Suncorp’s crown.

Through 3D visuals and conceptual renders, DPoV has brought a new level of irrigation design to the landscape / irrigation consulting industry. Client understanding and education for the complexities of irrigation requirements with a high rise structure was the key focus for DPoV’s involvement and has now been incorporated as part of the overall design scheme for the development.



## 205 NORTH QUAY, BRISBANE CBD



Cbus Super Queensland's latest undertaking is a multi-storey, multi-purpose facility located right on the Brisbane River.

The project is currently in DA approval stage and with landscape concepts changing to suit the ever developing architectural proposals, the client was looking for an irrigation designer to provide conceptual renders to support the artistic landscape proposal documents.

DPoV was engaged through prior experiencing working with Cbus on 443 Queen Street but mostly for the irrigation concept design and documentation services we provide.



205 North Quay will also be a 100% BIM orientated development through the use of REVIT and other supporting BIM design software packages which DPoV is the only irrigation consulting company in Queensland that can offer BIM design services









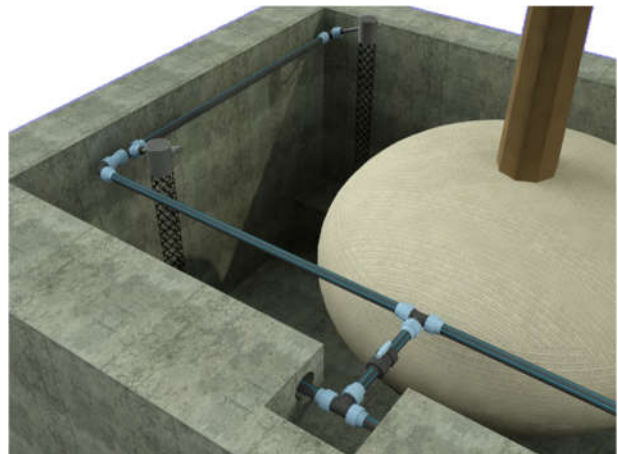
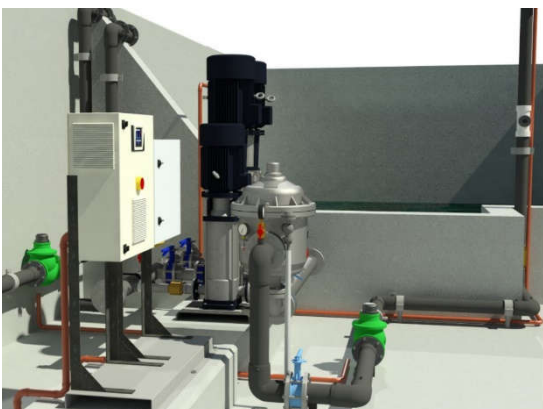


A new jewel is being created within Brisbane's CBD crown of new age luxury residential towers.

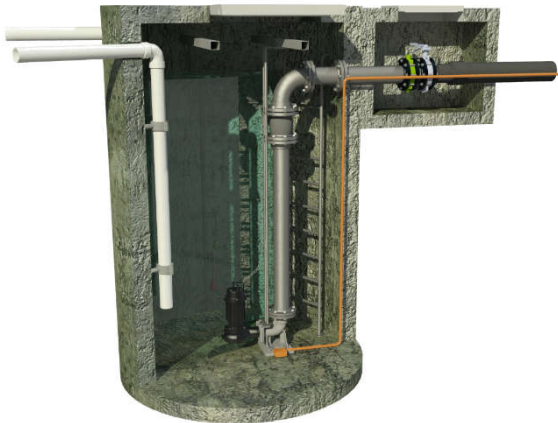
Lead by Singapore design team WOHA and Architectus, this development will boldly display the most cutting edge landscape and architecture that Brisbane has seen to date.

From water harvesting to treatment then dispersal through intricate irrigation systems, all aspects have been carefully designed and realised through 3D imagery.

Conceptual renders such as these compliment the detailed landscape architectural renders and documents for inclusion in landscape submissions.



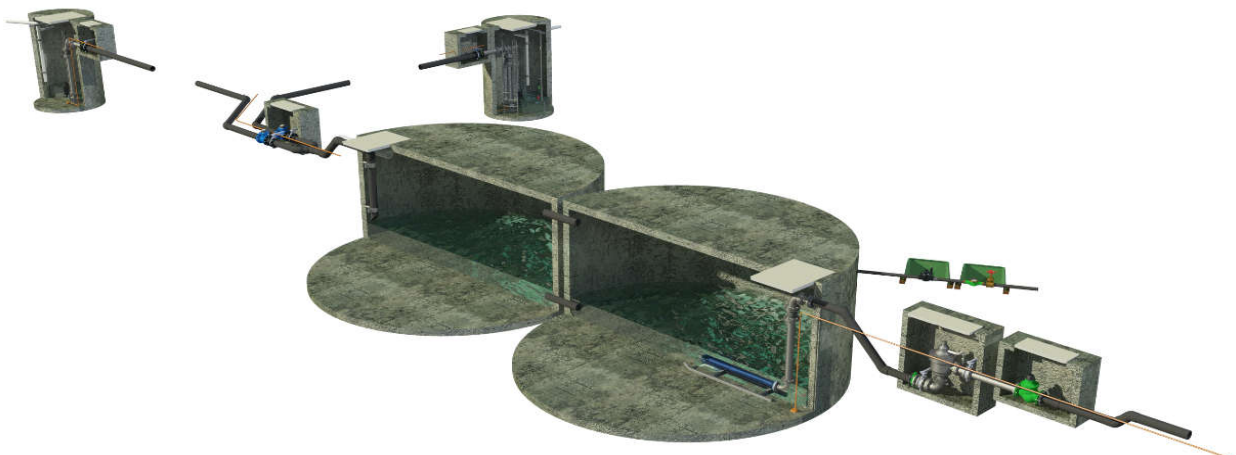
## CADDIES CREEK SPORTING PRECINCT



The Caddies Creek Sporting Precinct for The Hills Shire Council in NSW represented a new milestone in 3D documentation.

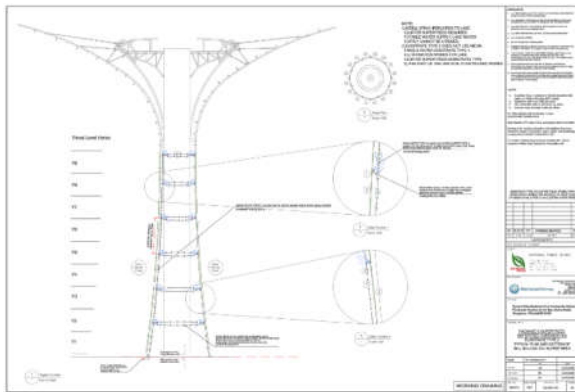
Utilising Autocad 3D and Google Earth, 3D models were created of all major infrastructure for the irrigation system which was then able to be imported into the site civil works models.

Detailed modelling of items such as underground irrigation water storage tanks, valve pits and pipework alignments provide invaluable collaboration information with drainage designs and bulk earth works.





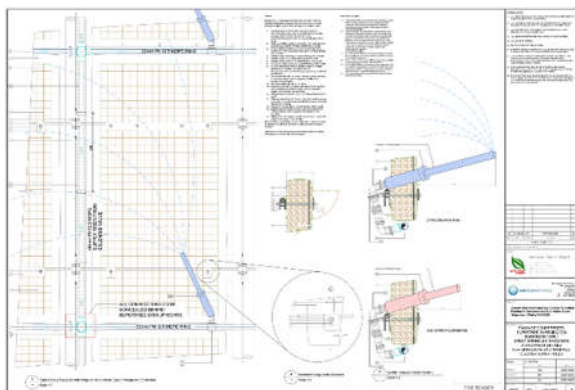
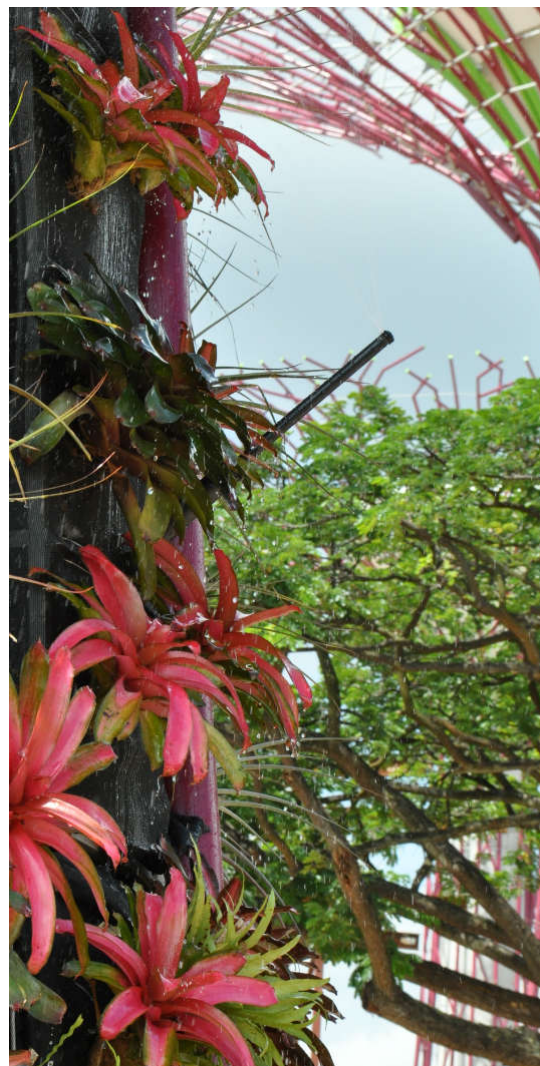
# GARDENS BY THE BAY, SINGAPORE



Singapore's Gardens By The Bay is a worlds first with climate controlled conservatories and the majestic Supertrees.

Detailing the irrigation requirements and fabrication was a complicated process that required clear and highly detailed drawings.

From pumps and pipes to intricate sprinklers the entire site was designed with and documented with the idea in mind that irrigation can be seamlessly incorporated into landscape to maintain healthy growth and first class presentation without knowing there is an artificial life source keeping it all alive.







## General Irrigation Consulting Services

**DPoV specializes in irrigation systems for commercial developments, council projects, and government infrastructure.**

Residential Estates

Commercial premises

Shopping Centres

Retirement and Aged Care Services

Parklands

Golf Courses

Sporting Fields

Site Redevelopments

Greenwalls & Green Rooves

**Irrigation documentation packages also cater for all levels of project documentation:**

Site concepts and Master Planning

Design & construction packages

Complete detail design and documentation for turn key projects

3D Conceptual images for DA submission and public display

Specifications and Schedule of Rates

**Additional irrigation consulting services available:**

DPoV can also provide the following services for new or existing irrigation systems

As Constructed drawings

Google referenced as constructed drawings for on site "Real Time" location

Irrigation system audits and uniformity reports

Survey location services, pipe and cable tracing, asset registering

Site management and construction inspection services

## Project Experience (Australia)

Urban Forest (Aria Properties)  
Mackay Waterfront Public Realm (MRC)  
Miles CBD Redevelopment  
Queens Wharf Riverside Parkland & Foreshore Master Planning  
205 North Quay (Cbus Properties)  
80 Ann Street (Mirvac)  
TCGW Sportfields Springfield  
Providence Ripley Master Planning  
Legacy Way Tunnel Works Mt Cootha  
Airport Link Road  
Enogerra, Laverack, Tindal, William Town Defence Projects  
Queensland Childrens Hospital (Lady Cilento)  
UQ St Lucia – Health & Behavioural Sciences Building (Wilson Architects)  
UQ St Lucia – Student Accommodation (Wilson Architects)  
Brisbane Airport Park & DFO  
Brisbane International and Domestic Terminals  
Northshore Hamilton Parklands  
Yarrabilba Wetlands  
Northlakes Development  
Toowoomba Queens Park  
Gold Coast Cultural Precinct  
443 Queens Street  
Moggil Sports Precinct

## Project Experience (International)

Bangalore International Airport  
TRX CBD Central Malaysia  
Gardens By The Bay Singapore  
Mandai Zoo Singapore  
Hong Kong Stadium

## Associated Industry Drafting Services



### Water Storage Industry

Water Storage systems.

Plumbing and drainage systems.

3D Renders and conceptual drawings.

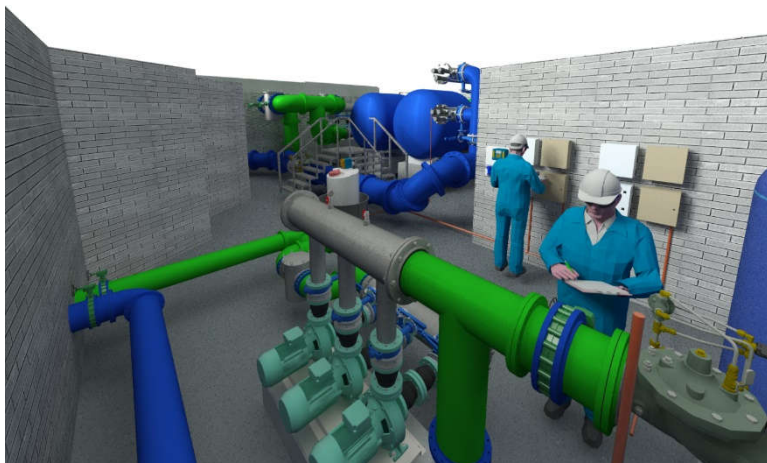


### Water Filtration Industry

Filtration systems.

Plumbing and equipment assemblies.

3D Renders and conceptual drawings.



### Water Treatment Industry

Pumping and Filtration systems.

Plumbing and Irrigation systems.

3D Renders of complete plant rooms  
and conceptual site drawings.





**CGU Professional Risks**  
 189 Grey Street South Brisbane QLD 4101  
 cgu.com.au/professionalsrisks

**Policy No:** 04CON1830918  
**Account No:** 0202162  
**Account Name:** PSC CONNECT P/L - ARM INSURANCE

## Certificate of Currency

Page: 1 of 2

**Item 1 The Insured:** DARREN KEITH ROWLATT  
 DIGITAL POINT OF VIEW

**Item 2 Address:** 5 COOLMUNDA STREET  
 MANSFIELD  
 QLD 4122

**Item 3 Professional Services Covered by Policy One:**  
 CAD drafting of irrigation & filtration systems,  
 landscape architecture and related project  
 management services.

**Insured's Business Covered by Policy Two:**  
 As per the Professional Services stated in Policy One

**Item 4 Description of Policy:**  
 Professional Indemnity+Broadform Liability (CGU PIB 03-17)

**Item 5 Period of Insurance:** From 4/03/2020 to 4:00 pm on 4/03/2021

**Item 6 Particulars of Risk:**

**Policy One: Civil Liability Professional Indemnity**

6.1 The Total Sum Insured is \$10,000,000 which includes all Policy sections, and \$20,000,000 in the aggregate for all Claims.

6.2 Amount of the Excess

(a) Australia and New Zealand Jurisdiction	\$1,000
(b) Other Jurisdiction	\$1,000
(c) Enquiries	\$1,000
(d) Employment Practices Liability	Not Applicable
(e) Fidelity Cover	Not Applicable

6.3 The Retroactive Date is 4/03/2020.

6.4 Jurisdictional Limits are WORLD WIDE, EXCLUDING U.S.A.

6.5 Specific Cover Limits

(a) Enquiries	\$250,000
(b) Employment Practices Liability	Not Insured
(c) Fidelity Cover	Not Insured
(d) Cyber Cover Extension	Not Insured

**Policy Two: Broadform Liability**

6.6 Sum Insured

(a) Public Liability (Unlimited in the aggregate)	\$20,000,000
(b) Products Liability (In the aggregate)	\$20,000,000
(c) Advertising Liability (In the aggregate)	\$20,000,000
(d) Property in the Insured's Physical or Legal Control	\$100,000

**Item 7 Date and Place of Issue:** 20/03/2020 Brisbane, Queensland.

This Certificate of Currency is a summary only of the cover provided by this Policy, effective as at date of issue only. For a full description of cover, please refer to the Policy schedule and wording.

Signed for and on behalf of Insurance Australia Limited



Najibi Bisso  
 National Underwriting Manager